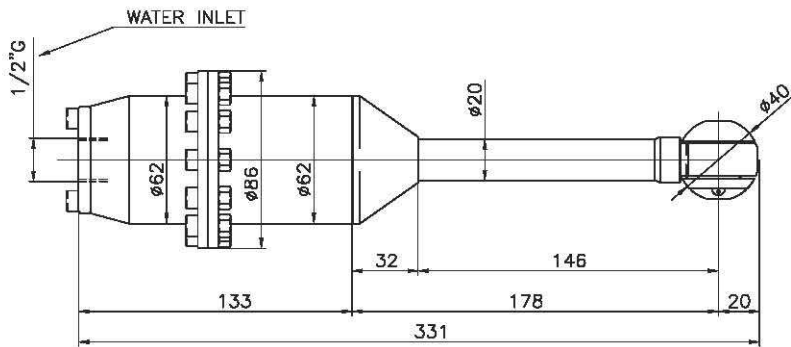


**NEW**



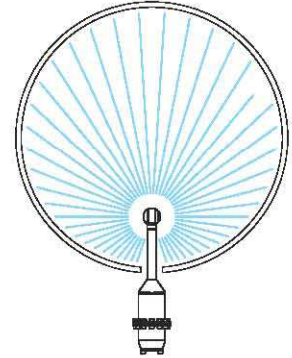
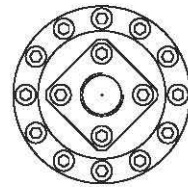
**XB 031**

**Tête de lavage  
de cuve  
hydraulique**

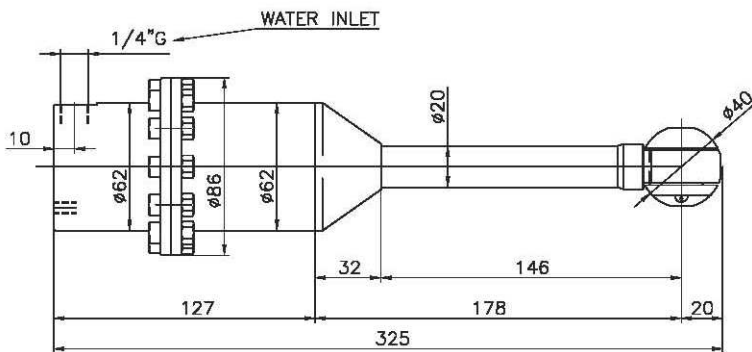


| TECHNICAL DATA            |                          |
|---------------------------|--------------------------|
| O.RING                    | EPDM                     |
| SLIPPER                   | PTFE+CARBON FIBRE        |
| FILTER                    | NONE                     |
| NOZZLES POSITIONS         | 2 OR 4                   |
| NOZZLES TYPE              | SPECIAL NOZZLE XB 030    |
| MAX OPERATING FLOW        | 30 L/min - 8 USG/min     |
| MAX OPERATING PRESSURE    | 150 bar - 2100 psi       |
| MAX OPERATING TEMPERATURE | 90 °C - 194°F            |
| MATERIAL                  | INOX AISI 316            |
| LUBRICANTS                | NONE                     |
| CONICAL GEARS             | FIXED Z=23 ROTATING Z=25 |
| MODULE                    | 1                        |
| COMPLETE CYCLE            | 25 ROTATIONS             |
| COMPLETE CYCLE TIME       | 1.1 MIN.                 |
| ROTATION SPEED            | 24 RPM                   |
| WEIGHT                    | 4.6 KG - 10 LBS          |

**NEW**

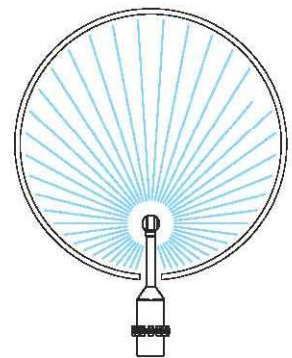
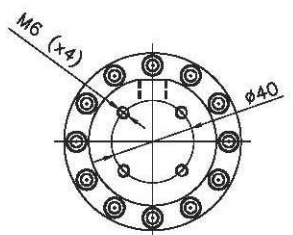


**Code  
XB 031 AAD 01**



| TECHNICAL DATA            |                          |
|---------------------------|--------------------------|
| O.RING                    | EPDM                     |
| SLIPPER                   | PTFE+CARBON FIBRE        |
| FILTER                    | NONE                     |
| NOZZLES POSITIONS         | 2 OR 4                   |
| NOZZLES TYPE              | SPECIAL NOZZLE XB 030    |
| MAX OPERATING FLOW        | 30 L/min - 8 USG/min     |
| MAX OPERATING PRESSURE    | 150 bar - 2100 psi       |
| MAX OPERATING TEMPERATURE | 90 °C - 194°F            |
| MATERIAL                  | INOX AISI 316            |
| LUBRICANTS                | NONE                     |
| CONICAL GEARS             | FIXED Z=23 ROTATING Z=25 |
| MODULE                    | 1                        |
| COMPLETE CYCLE            | 25 ROTATIONS             |
| COMPLETE CYCLE TIME       | 1.1 MIN.                 |
| ROTATION SPEED            | 24 RPM                   |
| WEIGHT                    | 4.6 KG - 10 LBS          |

**NEW**



**Code  
XB 031 AAE 01**